



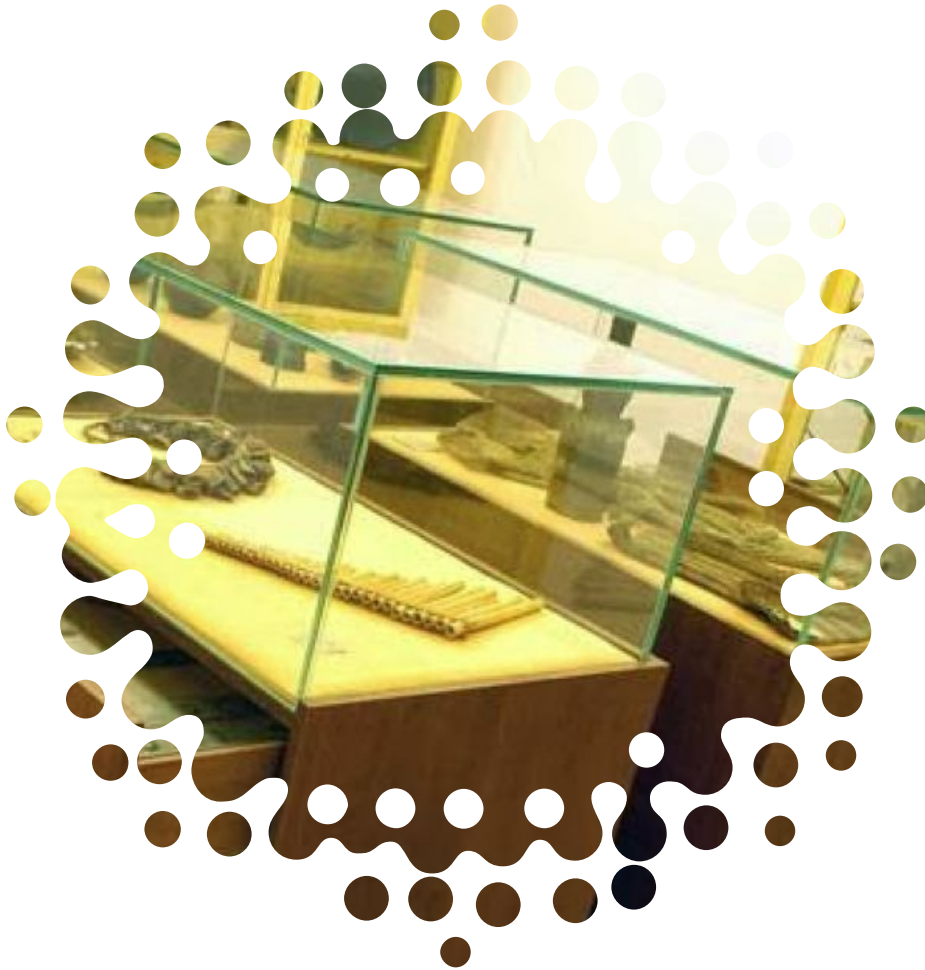
Unione Europea / Regione Marche



FONDO EUROPEO AGRICOLO PER LO SVILUPPO RURALE: L'EUROPA INVESTE NELLE ZONE RURALI

Progetto approvato nell'ambito del PSL PICENO, cofinanziato nell'ambito del Programma di Sviluppo Rurale 2007/2013 Regione Marche - Asse IV - Leader Attuazione Strategie di Sviluppo Locale - Misura 4.1.3.2. sub c - Sviluppo e/o commercializzazione di servizi riguardanti l'offerta turistica ed agrituristica delle aree rurali

Ripatransone



History and Ethnography Collection C. Cellini

Museo Civico
Palazzo Bonomi Gera





The **YouPiceno** project was managed by:

AdArt Società Cooperativa

Registered offices: Via Monte Rosa, 7 – 63074 San Benedetto del Tronto (AP)

Offices: Via dell' Airone, 21 – 63074 San Benedetto del Tronto (AP) – Tel (+39) 0735 657562; Fax (+39) 0735 446091

With funding from:

EUROPEAN AGRICULTURAL FUND FOR RURAL DEVELOPMENT: EUROPE INVESTING IN RURAL AREAS

A project approved under the PSL PICENO, co-financed in the framework of the 2007–13 rural development programme, Marche Region – Axis IV – Leader – Implementing local development strategies – Measure 4.1.3.2 sub c - Development and/or marketing of tourism and rural tourism services in rural areas

CATALOGUE-GUIDEBOOKS FOR THE MUSEI PICENI NETWORK

Concept: Progetto Zenone SAS

Editorial product: Progetto Zenone SAS

Editorial project: Progetto Zenone SAS – Antonella Nonnis

Scientific research and coordination: Concetta Ferrara

Iconographic research: Concetta Ferrara

Bibliography: Concetta Ferrara

Texts: Progetto Zenone SAS – Concetta Ferrara

Translation: Angela Arnone

Images: photo archives of the Musei Piceni network – Progetto Zenone SAS – photographic services by “Piceno Senso Creativo” (Marco Biancucci – FForFake Comunicazione Visiva)

Info: www.youpiceno.it – www.museipiceni.it – www.ecomuseovalledellaso.it – www.piceni.tv-info@yourpiceno.it – direzione@museipiceni.it – antonella.nonnis@progettozenone.it

Our thanks to:

GAL Piceno municipal authorities; Musei Piceni network; Musei Sistini del Piceno network; GAL Piceno manufacturing enterprise; regional INFEA system



Progetto Zenone SAS – May 2014

CATALOGUE GUIDEBOOKS INTRODUCTION

This guide is part of a set of 22 volumes which will lead the reader on an exciting journey of discovery of Piceno territory. Of these 22 guides, 18 are dedicated to the collections of the four museums that make up the Musei Piceni network (Palazzo de Castellotti museum complex, Offida; Palazzo Bonomi Gera municipal museum, Ripatransone; San Francesco museum complex, Montefiore dell’Aso; San Francesco cultural complex, Monterubbiano). The other four volumes are written as itineraries that focus on the specific history, art and environment traits that forge the Piceno identity (Piceno Museums and Collections; Natural Environment and Environmental Education Centres; Typical Towns and Products in Piceno; Artisan Studios of Piceno). Inspired by the complexity of the museum system and the lavish territory where it is located, these guides offer important proof of the fact that every element of material cultural heritage (whether housed in a museum or otherwise) and of Piceno’s traditional and typical way of life is the product of what happened and was generated in history and by the territory’s social development.

For this purpose, the 18 guides dedicated to Musei Piceni collections not only contain a presentation of each single collection and the relative museum, but also offer the reader an engaging cross-referenced text for putting together the various aspects of the complex web of relationships woven between a museum’s heritage, the actual container, the heritage spread across the territory, and the extensive intangible heritage of customs, traditions, rites, legends, and traditional production processes that still reflect the Piceno identity.

The Italian version of each guidebook comprises two main sections: the first is an introduction dedicated to the museum tour and brief notes point the reader/visitor in the direction of the idiosyncrasies of each collection. The second part focuses on one or more objects in the collection and in addition to the general information and the description of the object, offers a series of focused facts for explaining the artefact in more detail and revealing the link between the object and the museum and territorial context in which it is found.

Foreign language texts, in addition to general information offering concise, immediate tips for locating and identifying the object, contain a **descriptive part**, with three main areas of content: a reading of the image/description, origin and original location (physical context and social setting of provenance), original function and meaning.

The Musei Piceni guidebooks are conceived as four macro categories, one per museum, and are dedicated to the following subjects, which reflect the collections on show in each museum venue.

POLO MUSEALE PALAZZO DE CASTELLOTTI, OFFIDA

1. Museo delle Tradizioni Popolari – museum of folk traditions
2. Quadreria civica – municipal art gallery
3. Museo del merletto a tombolo – bolster lace museum
4. “G. Allevi” municipal archaeological museum.

MUSEO CIVICO PALAZZO BONOMI GERA, RIPATRANSONE

5. Pinacoteca civica – municipal art gallery
6. Galleria d’Arte Contemporanea – contemporary art gallery
7. “U. Gera” plaster cast museum
8. Raccolta storico-etnografica – historical and ethnographic collection
9. “G. Mercantini” – history of the Risorgimento museum

POLO MUSEALE SAN FRANCESCO, MONTEFIORE DELL’ASO

10. Carlo Crivelli room
11. “G. Basili” set design documentation museum
12. Museo della civiltà contadina – museum of rural culture
13. “D. Cantatore” collection
14. “A. De Carolis” – museum

POLO CULTURALE SAN FRANCESCO

15. Model of the Aso valley
16. Museo Civico Archeologico – municipal archaeological museum
17. “S. Mircoli” coin collection
18. Quadreria civica – municipal art gallery

RIPATRANSONE
"CESARE CELLINI" HISTORY AND ETHNOGRAPHY COLLECTION

Ripatransone's ethnographic history museum is on the second floor of Palazzo Bonomi Gera and has exhibits in three rooms, including 600 pieces from all over the world, collected and classified by Don Cesare Cellini throughout his life.

The collection, conceived by Cellini as a narrative made up of objects of different civilizations, is divided into areas of origin and has material from five continents, offering the visitor a journey into the exotic, but also the rediscovery of habits, customs and traditions typical of Western culture.



The journey through time and space proposed by the ethnographic collection starts in Europe, to which the first room is dedicated with displays of the most characteristic objects of Western civilization and culture (playing cards, microscope, typewriter, tobacco boxes, crucifixes, etc.); the second room is dedicated to Asia, after which the third and last room shows objects from Africa, the Americas and Oceania. In line with nineteenth-century philosophy, the Museum reflects the interest in the **exotic**, namely anything that comes from "other" places, distant in time and/or space, with a preference for oddities.



Therefore, in addition to everyday objects, the museum displays artefacts distinctive for the rarity of materials (various trinkets and items made with animal teeth, bird beaks, fish fins, etc.) and refined workmanship (Chinese fans and slippers, etc.), not to mention the symbolic and ritual meaning attributed



by the original cultures, as in the case of wind instruments used by Amazon natives, whose sound reproduces the lament of the evil spirit of called a "Iurupari". The exhibits are, in most cases, exchanges that Cellini had agreed with various museums, but also with the missionaries who travelled to different continents and for a long time were a privileged channel of knowledge and diffusion of distant and previously unknown cultures.



BIBLIOGRAPHY

Allevi G., *A zozzo per Offida*, Cesari, Ascoli Piceno 1926.

Allevi G., *Alla ricerca del tempio dell Ophys*, Tipo-litografia Cardi, Ascoli Piceno 1896.

Amato P. (a cura di), *Simone de Magistris: picturam et sculturam faciebat*, Fondazione Cassa di risparmio della Provincia di Macerata, Macerata 1996.

Basili G., *Il luogo e l'immagine effimera*, in Rampello D. (a cura di), *L'Expo di Shangai 2010. Il padiglione italiano*, Electa, Milano 2010.

Bigonciari P., Masciotta M., Cavallo L. (a cura di), *Cantatore: il paesaggio*, Artigraf, Firenze 1972.

Bossaglia R. (a cura di), *Adolfo De Carolis e il liberty nelle Marche*, Mazzotta, Milano 1999.

Canova G. (a cura di), *Giancarlo Basili: Spazio e architettura nel cinema italiano*, Alexa, Ancona 2000.

Capriotti K., *Due Bolli laterizi da Monterubbiano*, in "Picus. Studi e ricerche sulle Marche nell'antichità", n. 20, 2000, pp. 305 – 311.

Caselli C., *Pericle Fazzini. Modernità con le radici nella natura e nell'arte barocca. Il mancato monumento ai Caduti del mare di S. Benedetto*, in "Flash: quattordicinale di vita picena", 1996, pp. 16 – 17.

Cellini C., *Quaderni di Curiosità Etnografiche di Don Cesare Cellini*

Chiaradia C. (a cura di), *Un pittore fra i poeti: Domenico Cantatore*, Critica d'oggi, Roma 1971.

Comitato Esecutivo per le Onoranze di Adolfo De Carolis (a cura di), *Adolfo De Carolis: (1874-1974). Mostra antologica presso la sala De Carolis di Montefiore Aso, Arti grafiche Ricordi*, Milano 1974.

Core F., Agostini G., *Relazione illustrativa restaurazione della Chiesa di S. Francesco*, 1991

Da Varazze J., *Legenda aurea*, a cura di, Brovarone L. e V., Einaudi, Torino 2007.

Dania L., *La pittura a Fermo e nel suo circondario*, Milano 1969

Di Vincenzo M.B., *Chiesa e convento di San Francesco a Monterubbiano* (tesi di laurea), 1995.

Grigioni C., *Orafi Ascolani nella seconda metà del sec. XIV* in "Rassegna bibliografica dell'arte italiana", 1908, 17.

Lenzi A. (a cura di), *Adolfo De Carolis e il suo mondo (1892-1928) : l'arte e la cultura attraverso i carteggi De Carolis, D'Annunzio, Maraini, Ojetti*, ITEA, Anghiari 1999.

Levi Pisetzky R., *Il costume e la moda nella società italiana*, Torino 1978.

Lightbown R., *Carlo Crivelli*, Yale University Press, London 2004

Maffei T., Nonnis A. (a cura di), *La raccolta Adolfo De Carolis a Montefiore dell'Aso : guida al museo*, Progetto Zenone, Montefiore dell'Aso 2005.

Margozzi M., Rivosecchi V., Falconi I., *Il luogo dei Natali: opere di Pericle Fazzini dalla collezione Fondazione Cassa di Risparmio di Ascoli Piceno*, Stamperia dell'Arancio, Grottammare 2003.

- Montironi A. (a cura di), *Guardate con i vostri occhi: saggi di storia dell'arte nelle Marche*, Lamusa, Ascoli Piceno 2002.
- Nardi B. (a cura di), *Ascoli, la festa e la Quintana: vestirsi nella società marchigiana del Quattrocento*, Ente Quintana, Ascoli Piceno 1990.
- Nardi B., Ciaffardoni C., *Quintana: costumi di ieri e di oggi*, in "Piceno", IX, 2, 1985, pp. 65 – 72.
- Papetti S., *L'arte di Carlo Crivelli nel contesto storico – culturale piceno del XV secolo*, Stamperia dell'Arancio, Grottammare 1994.
- Pastoreau M., *L'uomo e il colore*, in "Storia Dossier", n. 5, 1987
- Pastoreau M., *L'emblématique Farnèse* in "Le Palais Farnèse", I, 2, Ecole française de Rome
- Pastoreau M., *Une histoire symbolique du Moyen Âge occidental*, Seuil, Paris 2004, pp. 99 – 110.
- Pastoreau M., *Une fleur pour le roi. Jalons pour une histoire médiévale de la fleur de lis*, in
- Rivosecchi V. (a cura di), *Fazzini e Grottammare*, Roma 1996.
Roma 1981.
- Rossi O., *Le opere di Pericle Fazzini presenti nelle Marche: scultura come morfologia del vuoto*, in "Arte e Cultura", 1995, pp. VI- VII.
- Scheiwiller G. (a cura di), *Il Pittore di Stanze*, Garotto, 1944.
- Scotucci W. (a cura di), *Nella terra di Pagani: itinerari storico-artistici nel Cinquecento marchigiano*, Silvana Editoriale, Cinisello Balsamo 2000.
- Sgarbi V. (a cura di), *Vincenzo Pagani, un pittore devoto tra Crivelli e Raffaello*, Silvana editoriale, Cinisello Balsamo 2008.
- Tonci O., *Due urne cinerarie da Monterubbiano (AP)*, in "Picus. Studi e ricerche sulle Marche nell'antichità", n. 10, 1990, pp. 222-229.
- Zampetti P. (a cura di), *Carlo Crivelli e i crivelleschi*, Alfieri, Venezia 1961
- Zampetti P., *Carlo Crivelli*, Nardini, Firenze 1986.



youpiceno.it